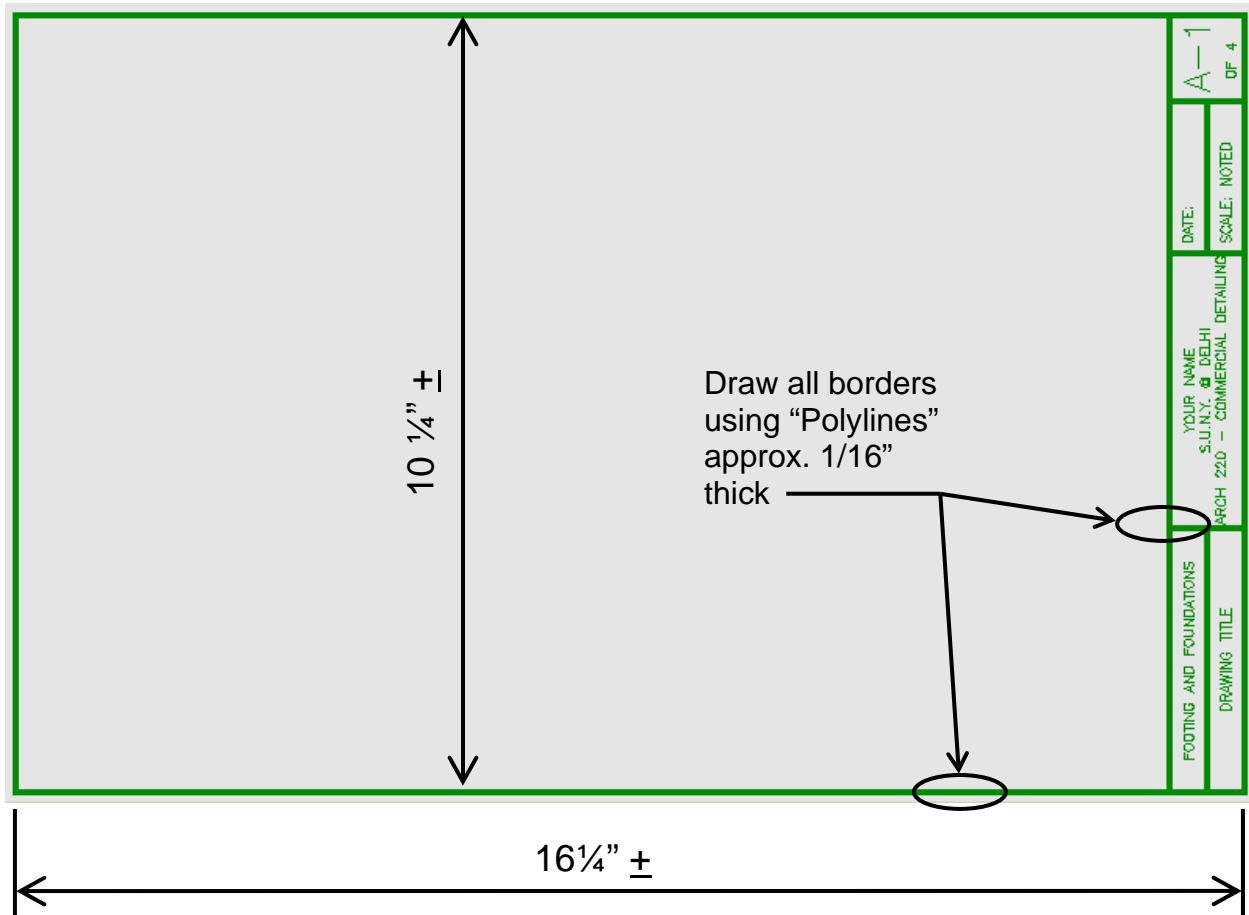
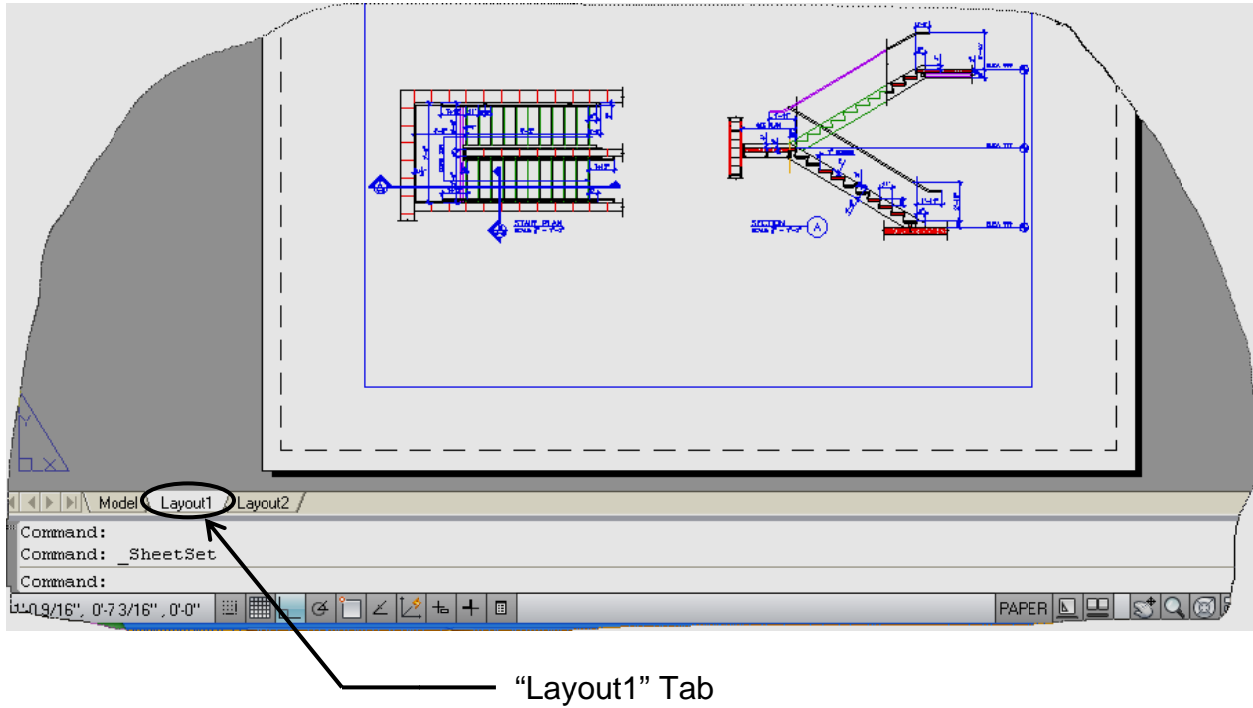


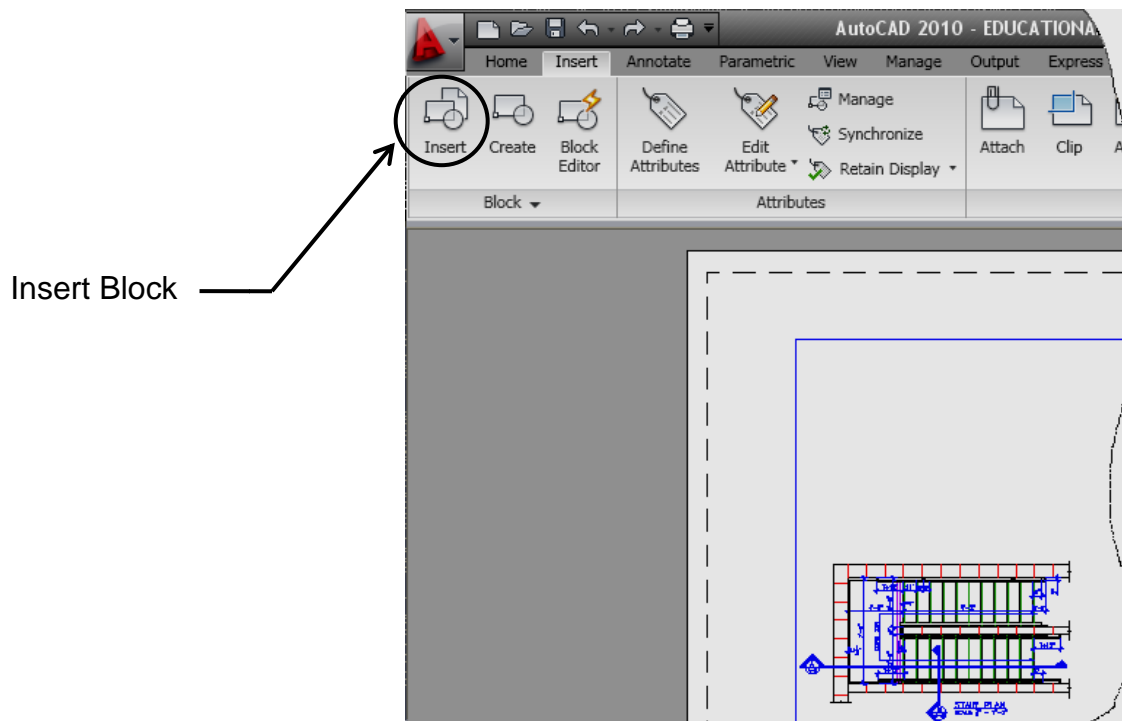
Step 2 – Create and save a stand-alone “Titleblock” Drawing:



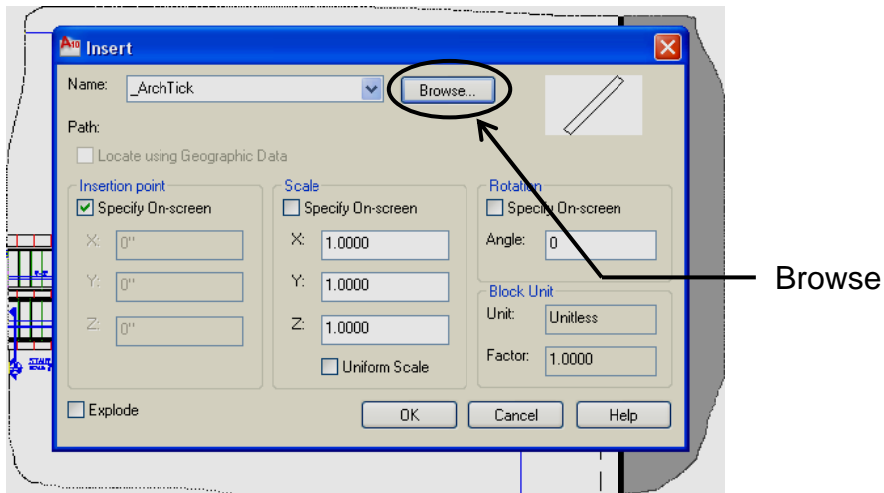
Step 3 – When in your current drawing assignment, click the “Layout1” Tab:



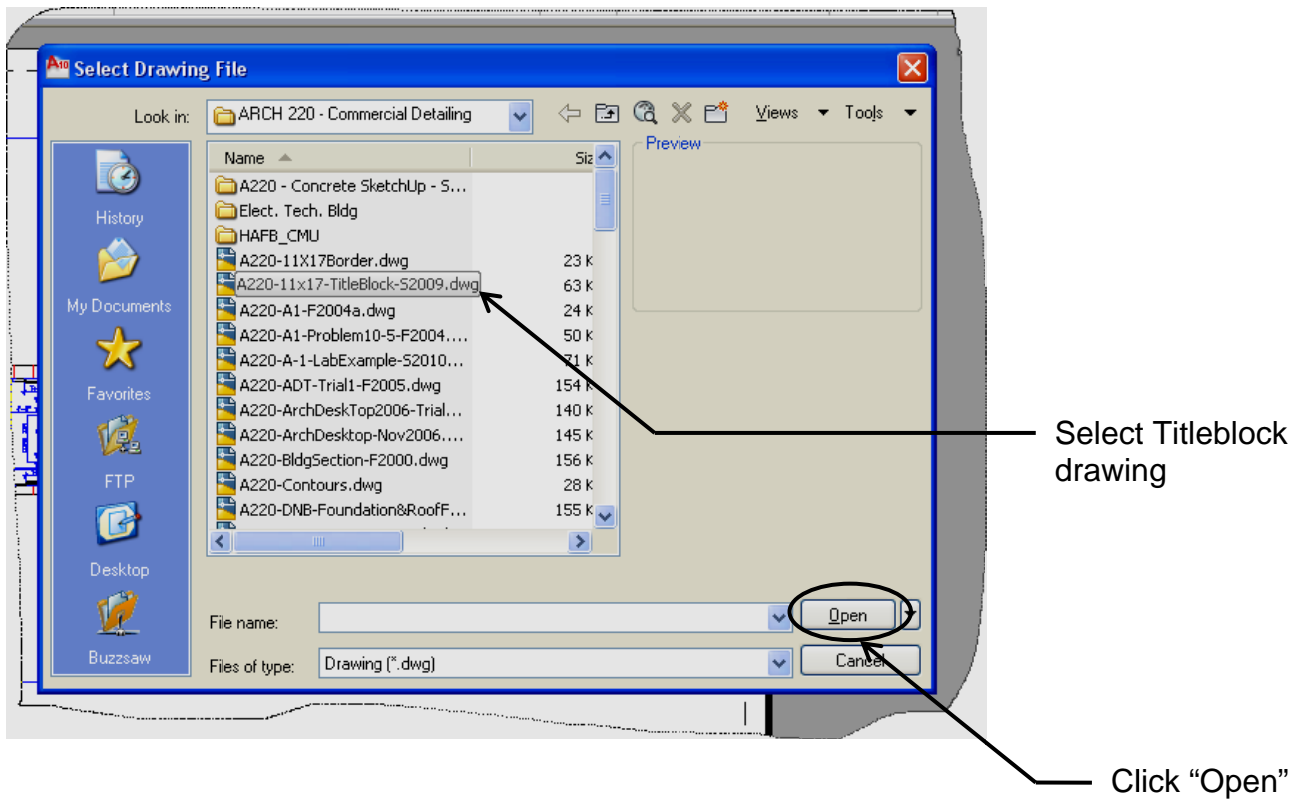
Step 4 – Insert your “Titleblock” drawing:



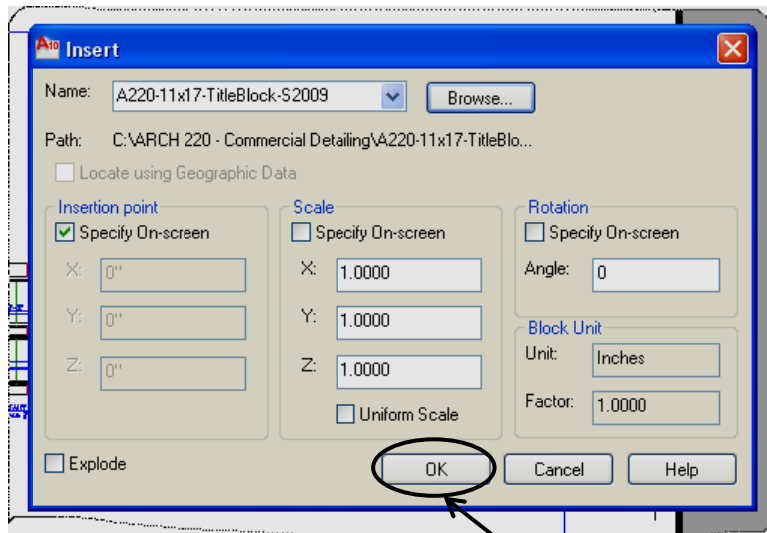
Step 5 – Click “Browse” to locate the Titleblock drawing:



Step 6 – Select and open the Titleblock drawing:



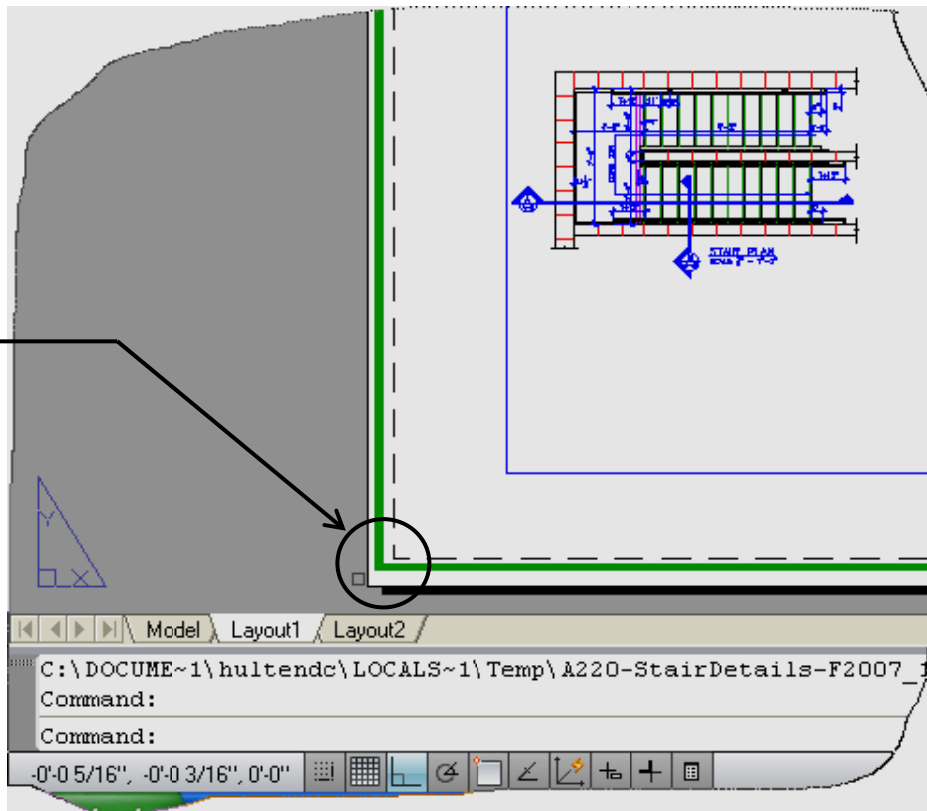
Step 7 – Click “OK”:



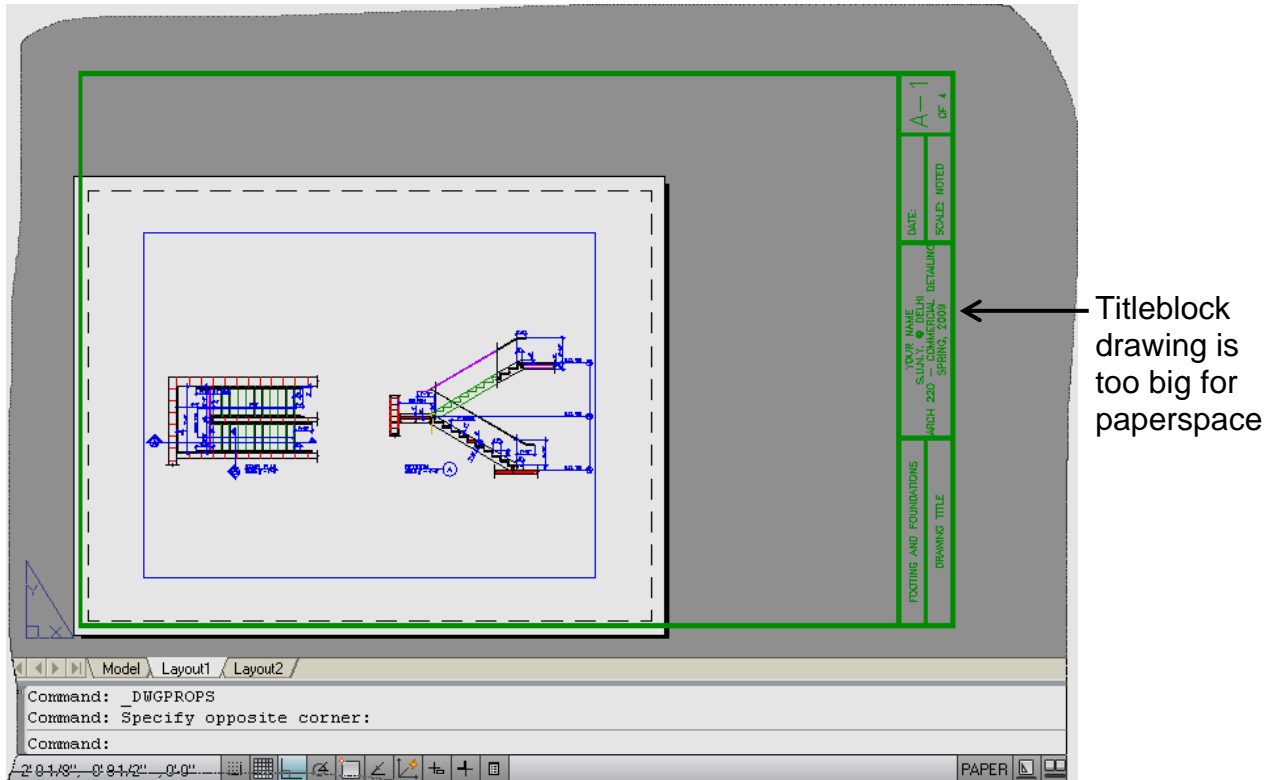
Click “OK”

Step 8 – Place lower left corner of Titleblock near lower left corner in the white space:

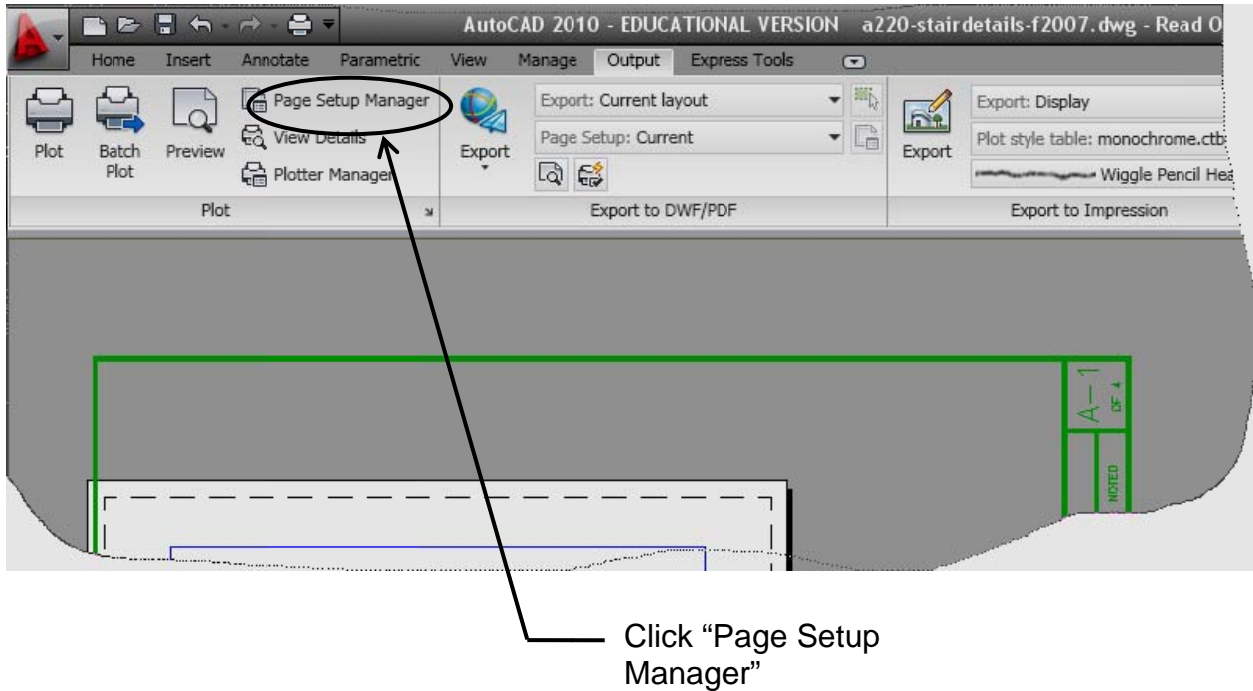
Place corner of Titleblock in corner of white space



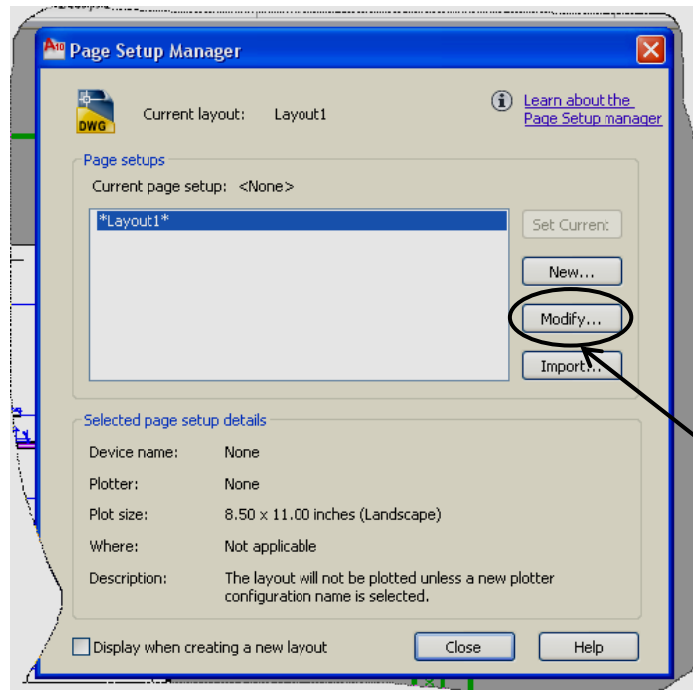
Step 9 – Verify size of Titleblock – will need to re-size the paperspace:



Step 10 – Click on “Page Setup Manager” from the “Output Tab:

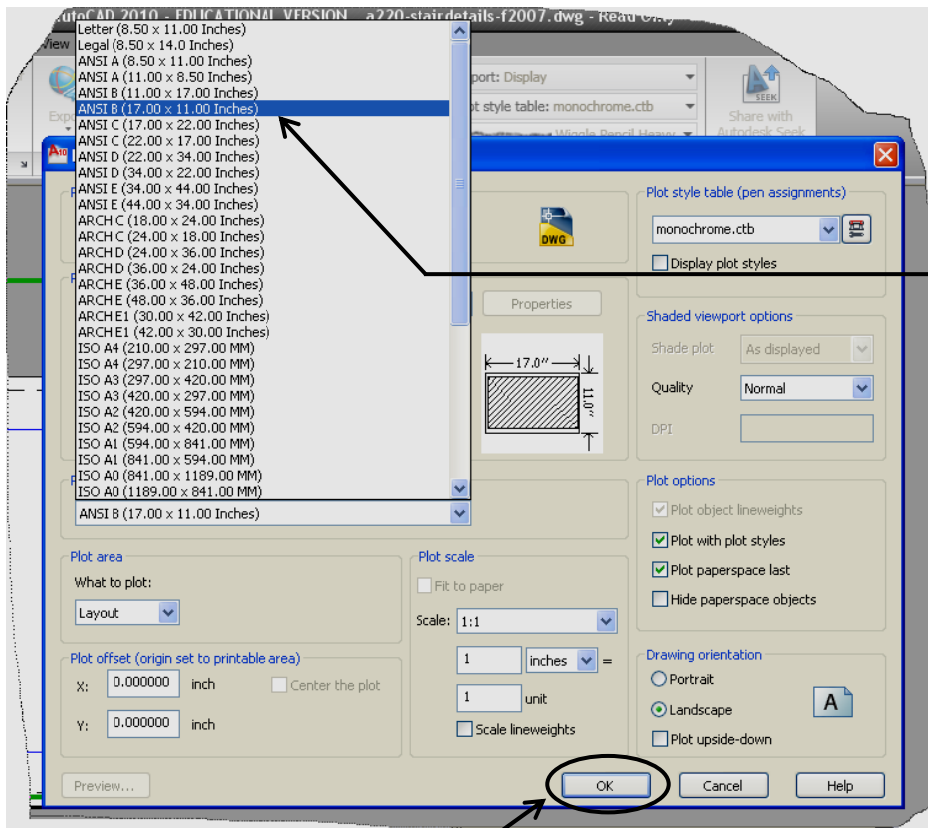


Step 11 – Click on “Modify”:



Click
“Modify”

Step 12 – Select “ANSI B 17”x11” for paper size:

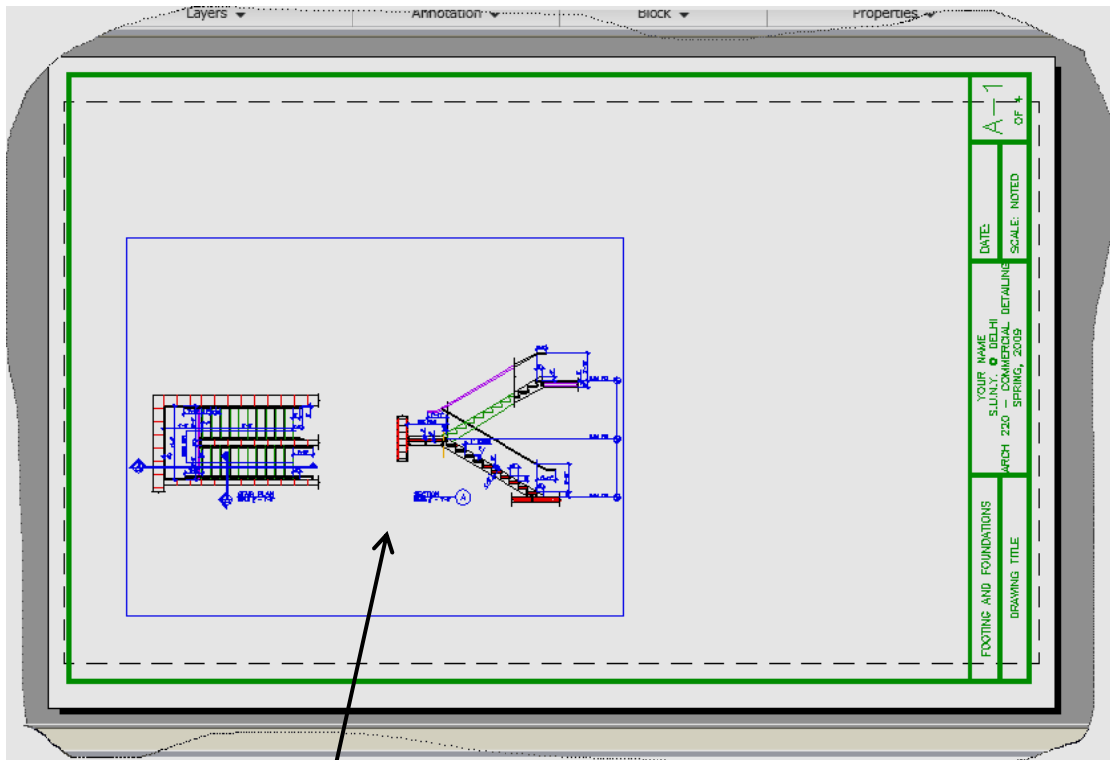


Click “ANSI B
17” x 11”

Click “OK”

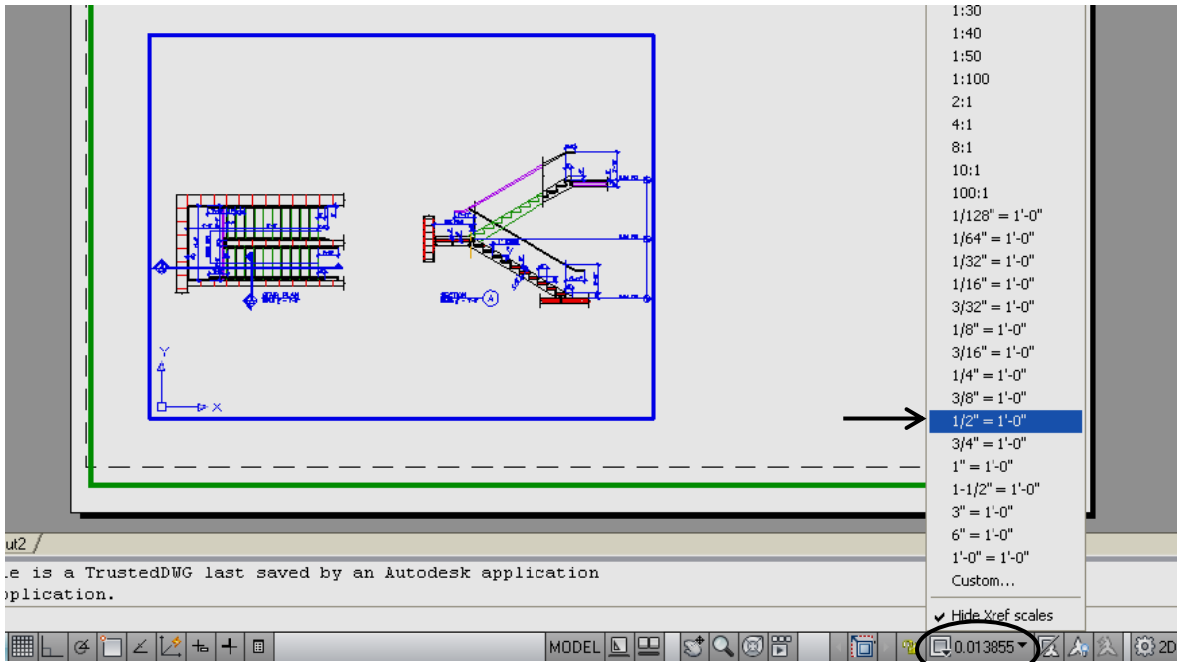
Step 13 – May need to move the Titleblock to be centered inside white paperspace

Step 14 – Double-click inside blue “Viewport” box to set the plot scale of drawing detail:



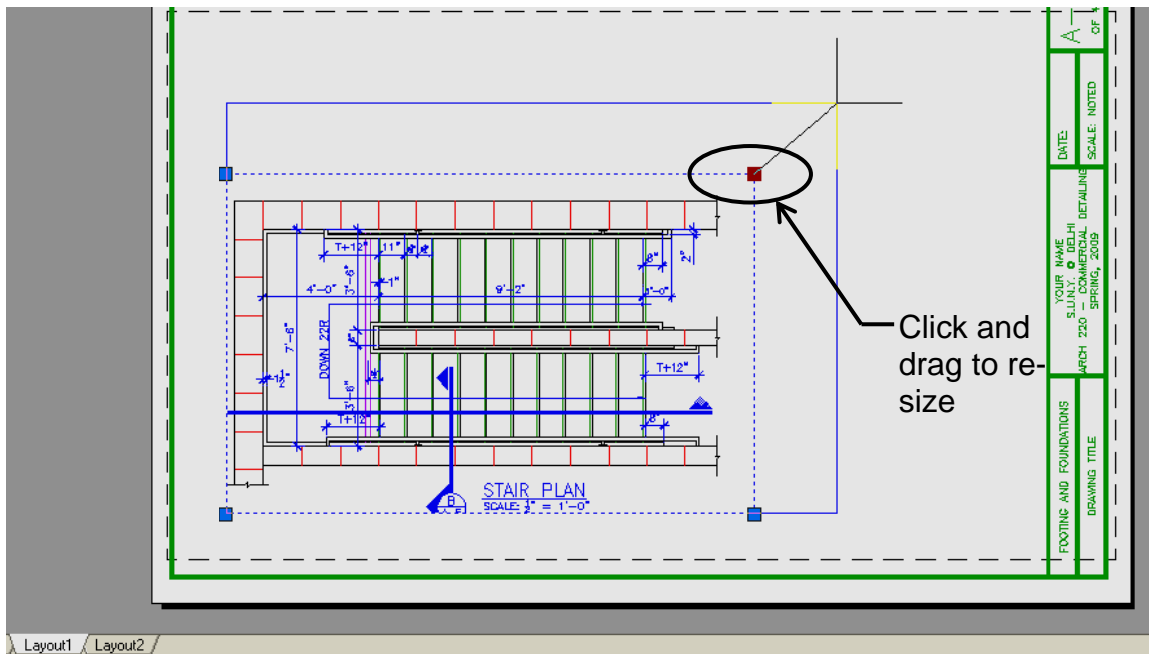
Double-click
inside blue
“Viewport” box

Step 15 – Select desired plotted scale of stuff within the “Viewport” box:



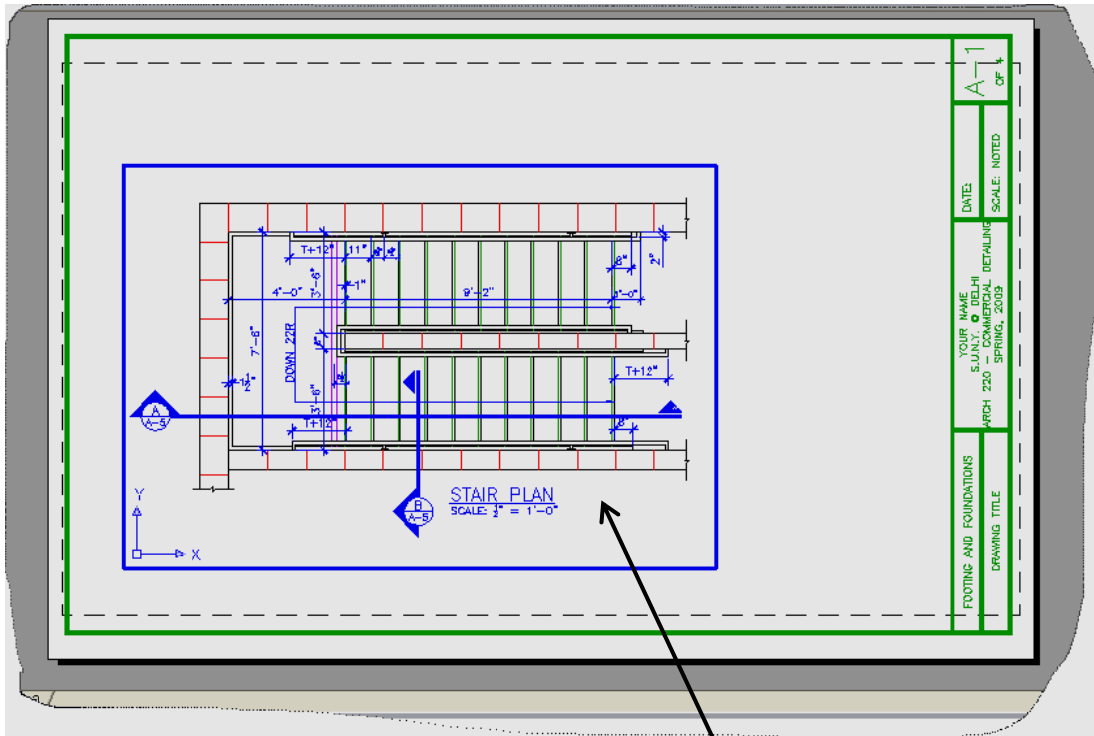
Click to select
desired plot scale

Step 16 – Double-click in white area, then select grips on “Viewport” box to re-size:



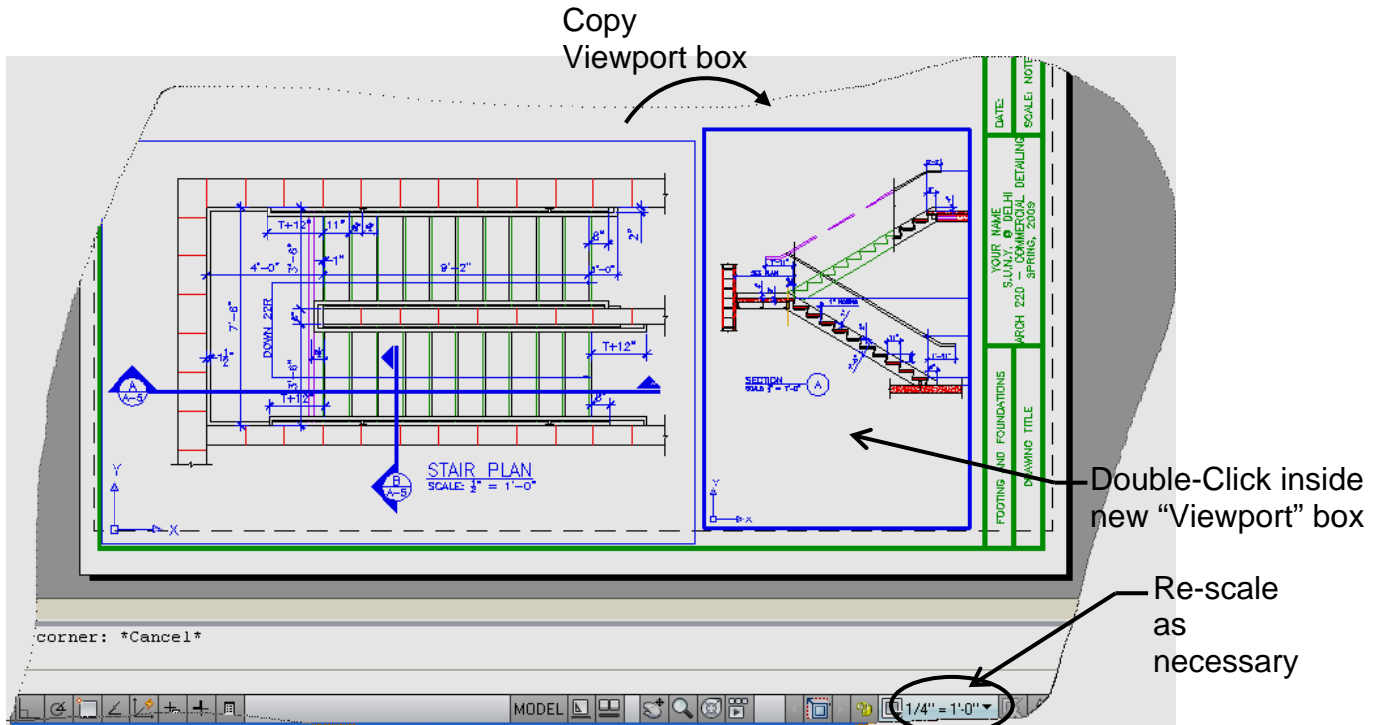
Click and
drag to re-
size

Step 17 – Double-click inside “Viewport” box to “pan”:

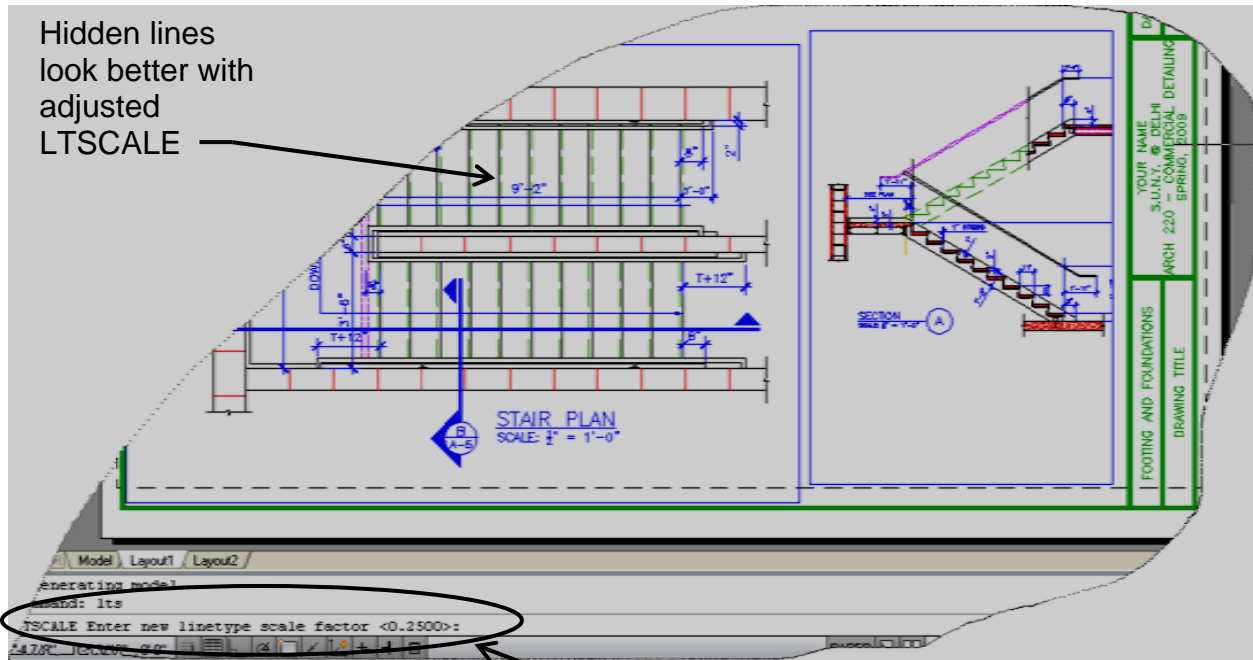


Double-Click inside “Viewport” box to pan

Step 18 – Copy another “Viewport” box to plot something else at different scale:



Step 19 – May need to use “LTSCALE” to make hidden lines look correct:



Type "LTS" at command prompt to change LTSCALE as necessary

Step 20 – Plot Settings – Be sure to plot at 1:1 and “Monochrome”:

