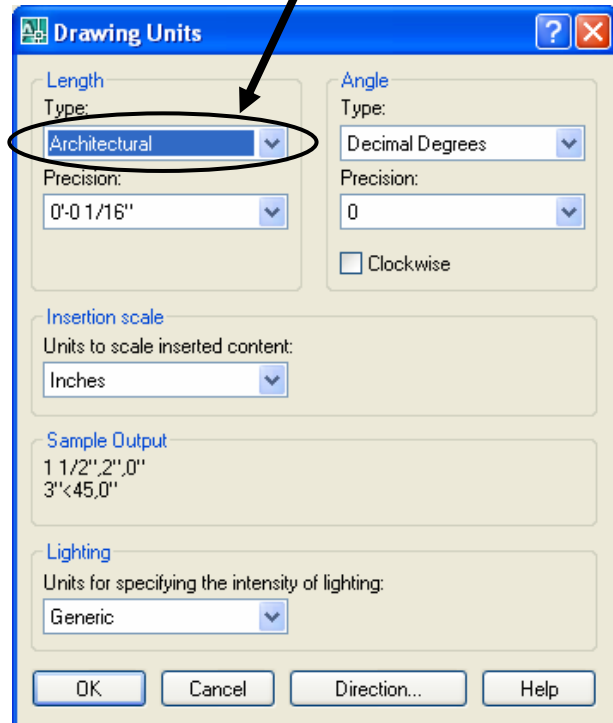


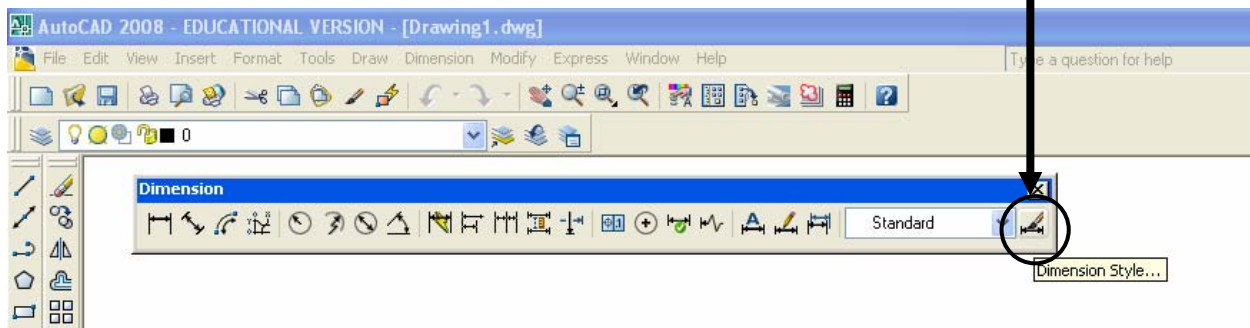
ARCH 220 – Commercial Detailing AutoCAD Dimensioning

Please follow the steps below to set up correct dimensioning styles to be used throughout the course:

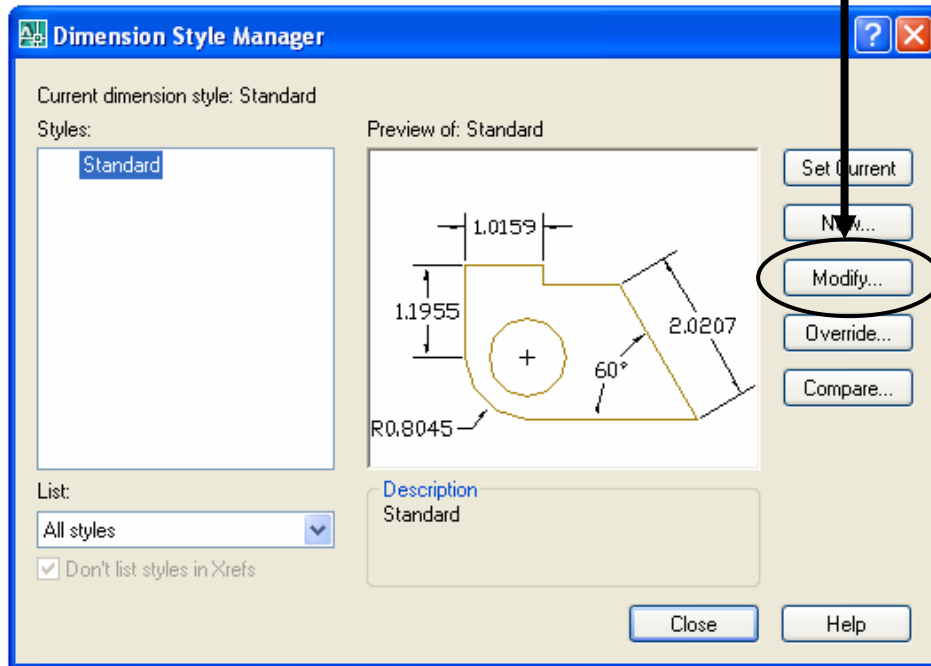
- 1) Go to “**Format**” → select “**Units**” → pick “**Architectural**”



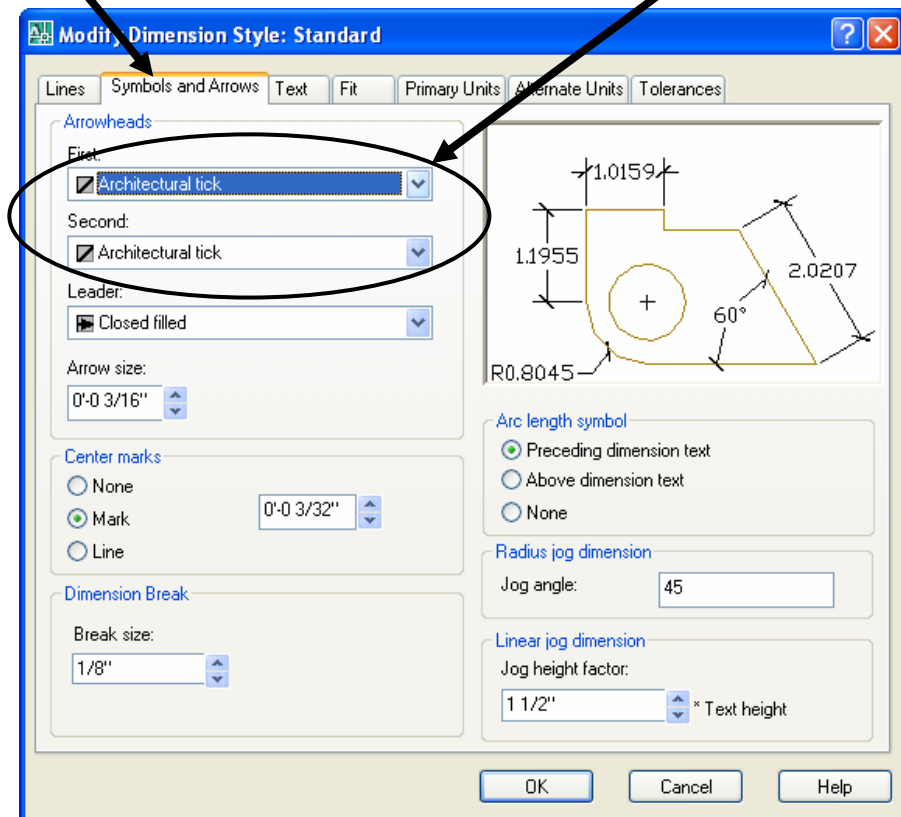
- 2) Select “**Dimension Style**” from Dimensions toolbar:



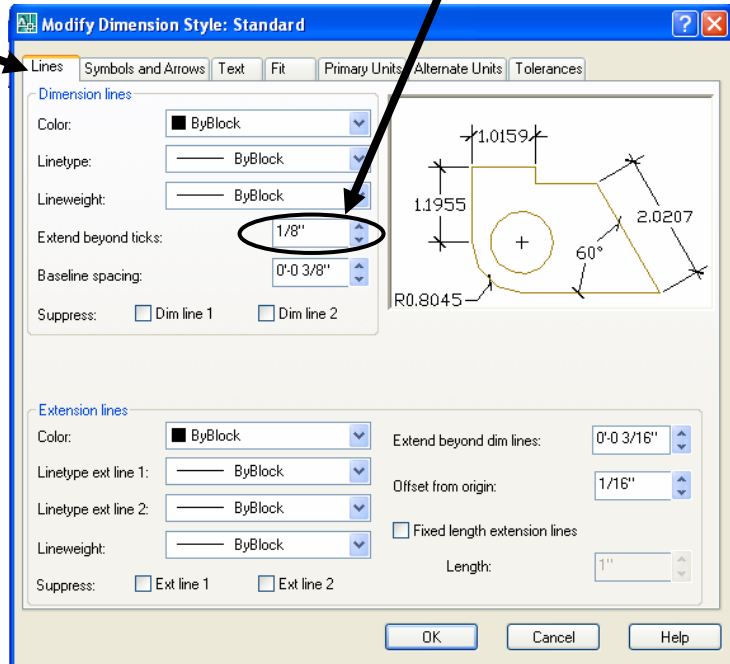
3) Select **“Modify”**



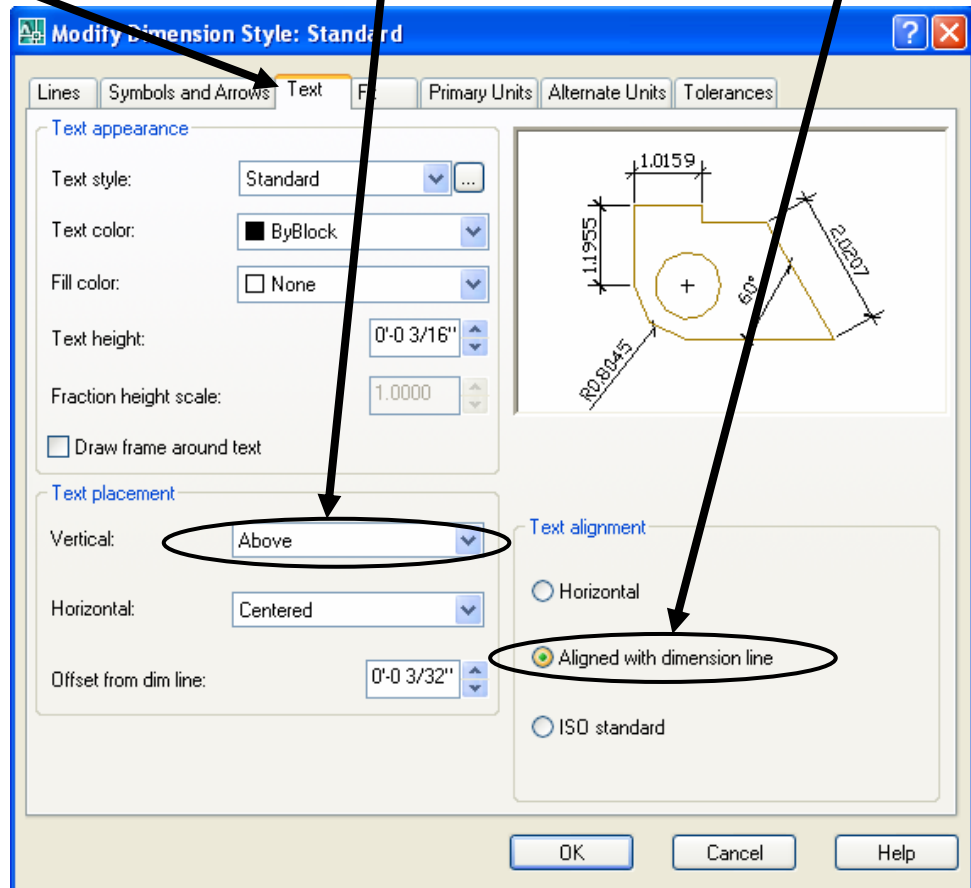
4) Select **“Symbols and Arrows”** tab, change arrowheads to **“Architectural Tick”**:



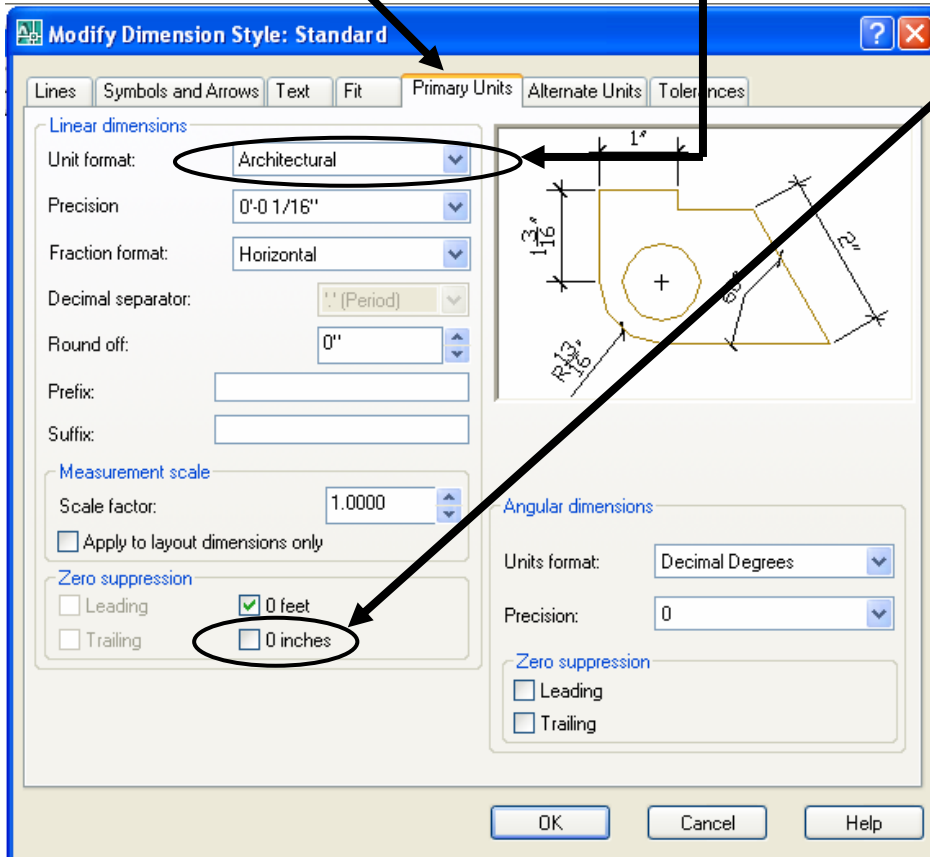
5) Select “Lines” tab, pick 1/8” from “Extend Beyond Ticks”:



6) Select “Text” tab, select “Vertical: = Above” and “Text Alignment = Aligned”



7) Select “Primary Units” tab, select “Architectural” and un-check “0 inches”:



8) Select “Fit” tab, type value for “Use overall scale of”: (Note: 16 is for 1/2" = 1'-0" scale)

Recall:

$$\frac{Plot_Scale}{12''} = \frac{\left(\frac{1}{8}\right)''}{Text_Ht.}$$

$$Fit = \frac{Text_Ht.}{\left(\frac{3}{16}\right)''}$$

